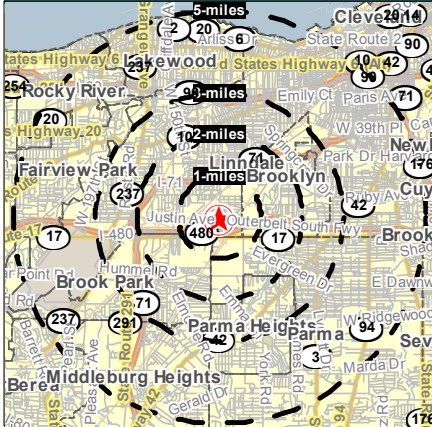


4713 W 130th St Cleveland, Ohio



HOUSEHOLDS
1 MILE - 3,987
3 MILE - 49,686
5 MILE - 152,435

POPULATION
1 MILE - 9,350
3 MILE - 116,950
5 MILE - 356,423

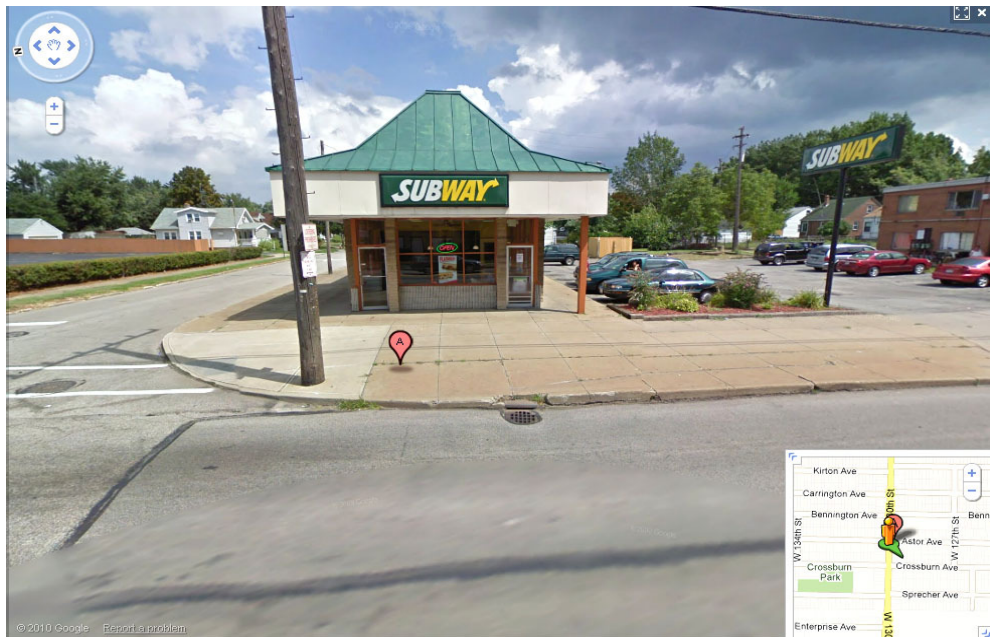
AVERAGE INCOME
1 MILE - \$43,698
3 MILE - \$46,553
5 MILE - \$49,188

DAYTIME POPULATION
1 MILE - 6,095
3 MILE - 57,769
5 MILE - 147,527

Contact: Steve Eisenberg
24500 Chagrin Blvd., Suite 120
Beachwood, Ohio, 44122
www.arnoldj Eisenberg.com

Phone: 216-831-6773
Fax: 216-831-3869
E-mail: SEisenberg@aol.com

AVAILABLE FOR LEASE



Property Features

Former Subway Location

Proximity to Sprecher Business District

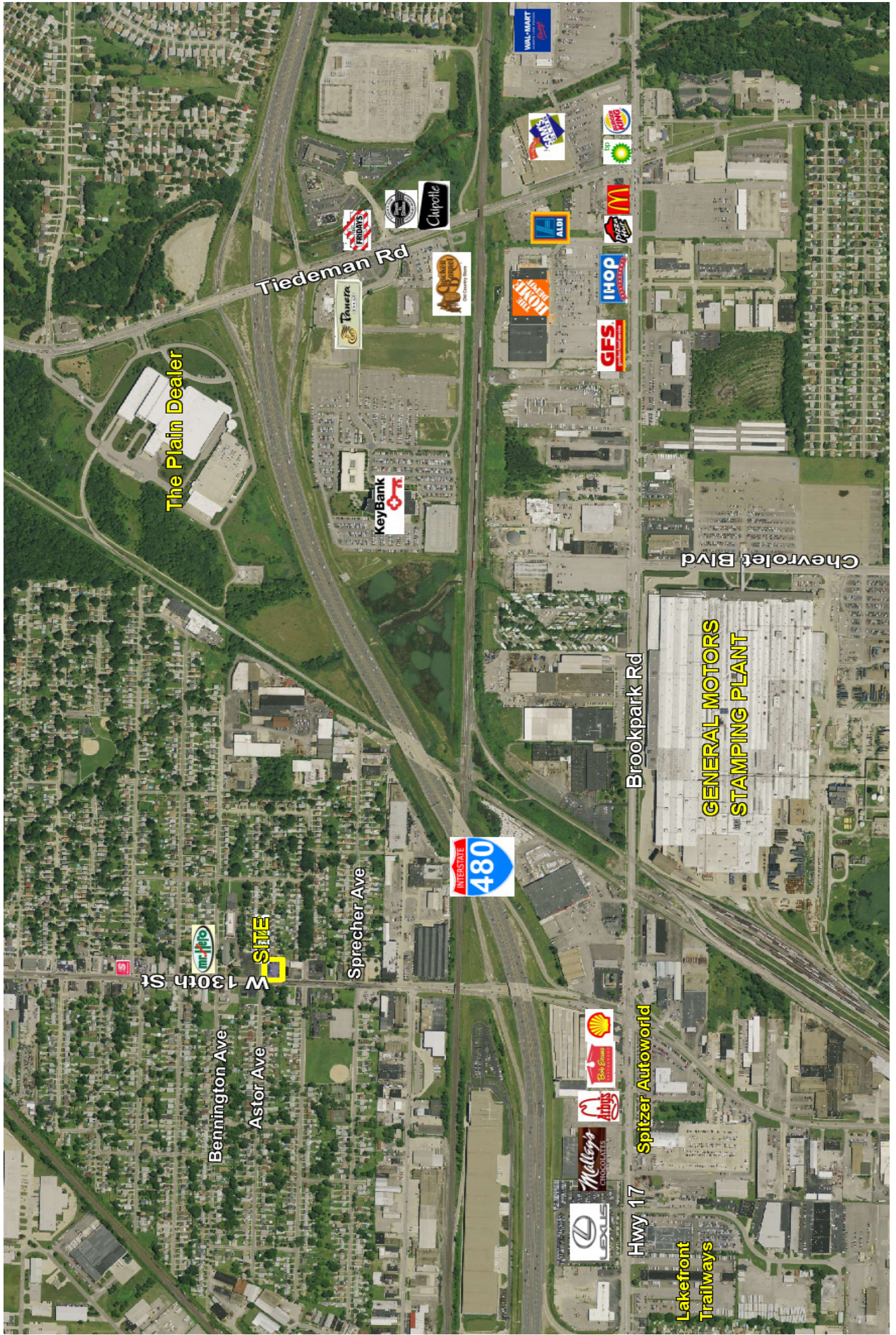
Near Major Employers - The Cleveland Plain

Dealer & General Motors Stamping Plant

147,527 Employees in a 5-mile radius

ARNOLD J. EISENBERG, INC.





The Plain Dealer

Tiedeman Rd

Chevrolet Blvd

GENERAL MOTORS STAMPING PLANT

Brookpark Rd

480

W 130th St

SITE

Bennington Ave

Astor Ave

Sprecher Ave

Hwy 17 Spitzer Autoworld

Lakefront Trailways

KeyBank

Panera

Chipotle

Aldi

IHOP

GFS

McDonald's

Dunkin'

Shell

Amigo

Malloy's CHOCOLATES

LEXUS



Prepared for:
Arnold J. Eisenberg, Inc

EXECUTIVE SUMMARY

Coordinates
X:-81.7801
Y:41.4255

4713 W 130th St Cleveland OH	1.00 mile radius	2.00 mile radius	3.00 mile radius	5.00 mile radius
Square Miles Land Mass	3.14	12.56	28.26	77.61
Population & Growth				
2010 Total Population	9,350	43,109	116,950	356,423
2010 Population Density	2,978psm	3,433psm	4,139psm	4,592psm
2000-2010 Growth	-796 -7.8%	-4,901 -10.2%	-14,810 -11.2%	-39,253 -9.9%
2000-2010 Avg. Annual Growth	-80 -0.8%	-490 -1.0%	-1,481 -1.1%	-3,925 -1.0%
2015 Total Population	8,909	40,716	110,177	337,693
2015 Population Density	2,838psm	3,242psm	3,899psm	4,351psm
2010-2015 Proj. Pop. Growth	-441 -4.7%	-2,393 -5.6%	-6,773 -5.8%	-18,730 -5.3%
2010-2015 Avg. Annual Growth	-88 -0.9%	-479 -1.1%	-1,355 -1.2%	-3,746 -1.1%
2000 Total Population	10,146	48,010	131,760	395,676
1990 Total Population	10,003	49,025	135,388	407,359
Households & Growth				
2010 Households	3,987	18,515	49,686	152,435
2000-2010 Growth	-316 -7.4%	-1,948 -9.5%	-5,918 -10.6%	-15,841 -9.4%
2000-2010 Avg. Annual Growth	-40 -1.2%	-243 -1.6%	-740 -1.8%	-1,980 -1.6%
2015 Households	3,783	17,452	46,723	143,904
2010-2015 Growth	-204 -5.1%	-1,063 -5.7%	-2,963 -6.0%	-8,531 -5.6%
2010-2015 Avg. Annual Growth	-41 -1.0%	-213 -1.1%	-593 -1.2%	-1,706 -1.1%
2000 Households	4,304	20,463	55,604	168,276
1990 Households	4,247	19,942	54,946	168,351
Families				
2010 Families	2,369	11,372	31,001	89,608
2015 Families	2,257	10,730	29,174	84,753
Income				
2010 Agggregate HH Income	\$ 174.24 million	\$ 866.13 million	\$ 2,313.03 million	\$ 7,497.90 million
2010 Average Household Income	43,698	46,779	46,553	49,188
2010 Median Household Income	34,787	38,511	38,901	41,285
2010 Per Capita Income	19,751	20,794	20,328	21,287
2015 Aggregate HH Income	\$165.41million	\$816.20million	\$2,175.35million	\$7,079.59million
2015 Average Household Income	\$43,719	\$46,768	\$46,559	\$49,197
2015 Median Household Income	\$34,888	\$38,569	\$38,947	\$41,336
2015 Per Capita Income	\$19,723	\$20,773	\$20,313	\$21,283
Daytime Demographics				
Number of Employees	6,095	25,107	57,769	147,527
Number of Businesses	210	975	2,442	7861
Avg. number Employees per Bus.	29.0	25.7	23.7	18.8
Residents per Business	44.5	44.2	47.9	45.3
Total Aggregate Annual Payroll	\$222.4million	\$916.8million	\$2,061.3million	\$4,826.8million