

555 BROADWAY AVE BEDFORD, OHIO

AVAILABLE FOR LEASE



HOUSEHOLDS
1 MILE - 4,304
2 MILE - 15,713
3 MILE - 38,079
5 MILE - 130,320

POPULATION
1 MILE - 9,900
2 MILE - 39,703
3 MILE - 99,468
5 MILE - 322,140

AVERAGE INCOME
1 MILE - \$31,768
2 MILE - \$29,565
3 MILE - \$29,099
5 MILE - \$34,690

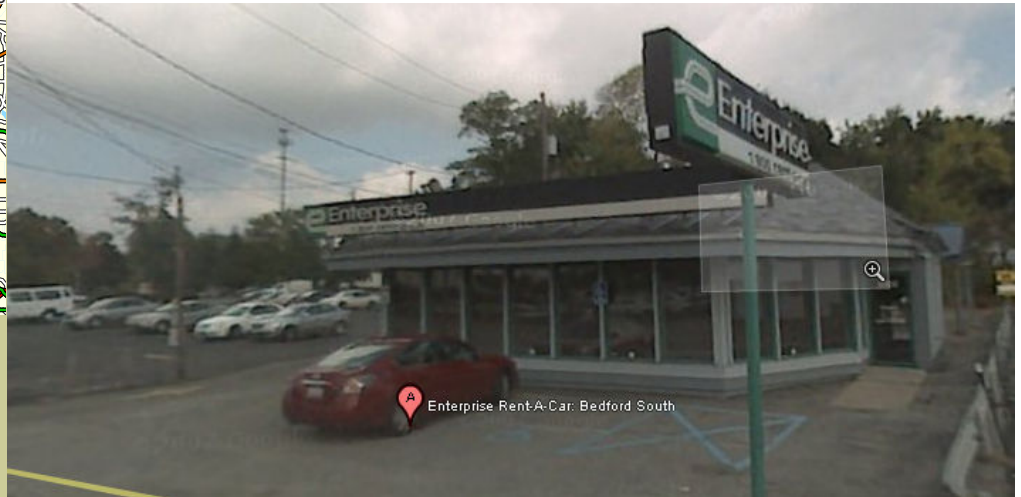
Contact: David I. Stein
24500 Chagrin Blvd., Suite 120
Beachwood, Ohio , 44122
arnoldjeisenberg.com

Phone: 216-831-6773

Mobile: 216-346-0350

Fax: 216-831-3869

E-mail: distein957@aol.com



Property Features

1,800 Square Foot Free Standing Building

Great Pylon Signage Available

Ample Parking

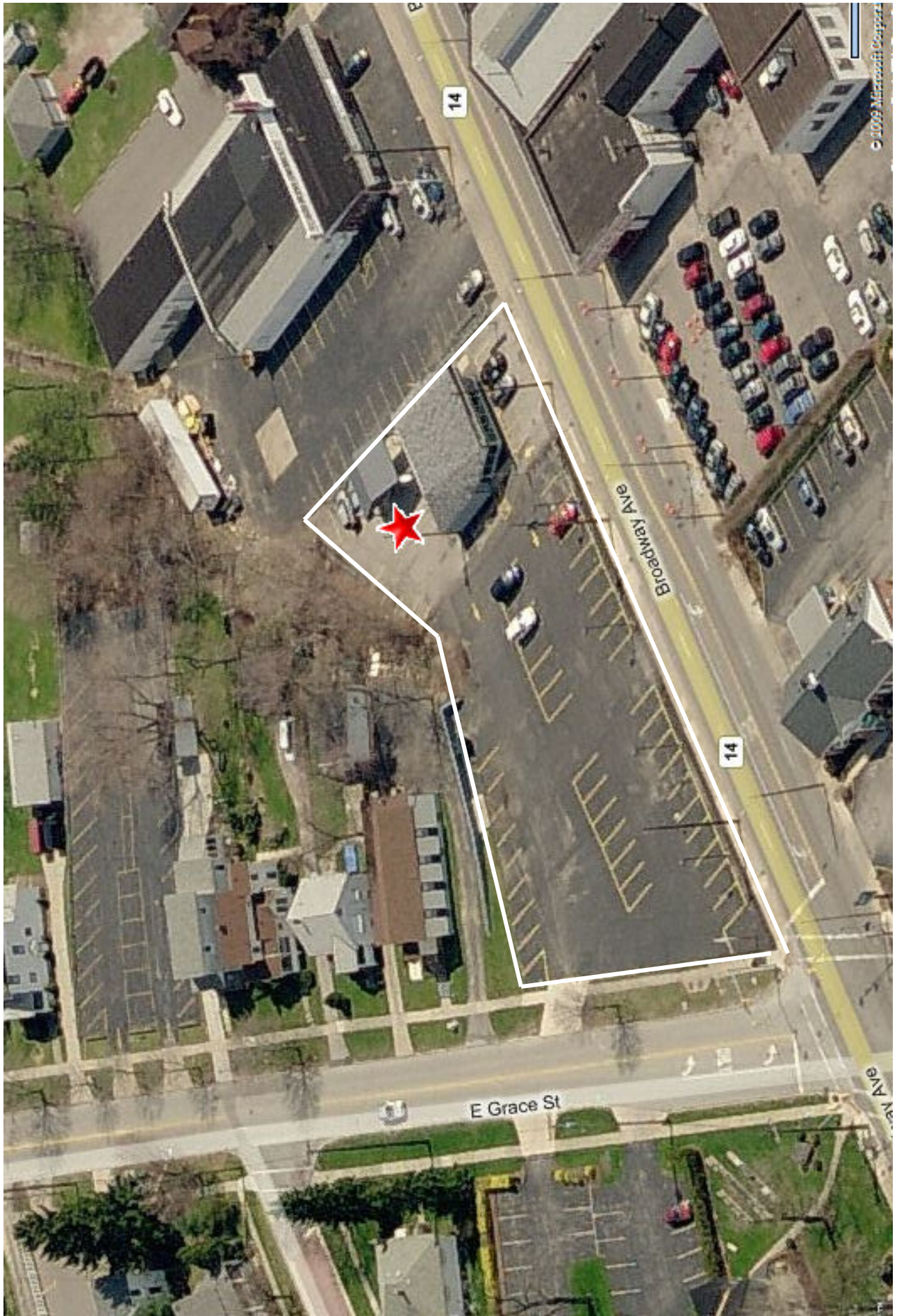
Located at a Traffic Light

Strong Demographics

Easily Accessible

ARNOLD J. EISENBERG, INC.





© 2009 Microsoft Corporation

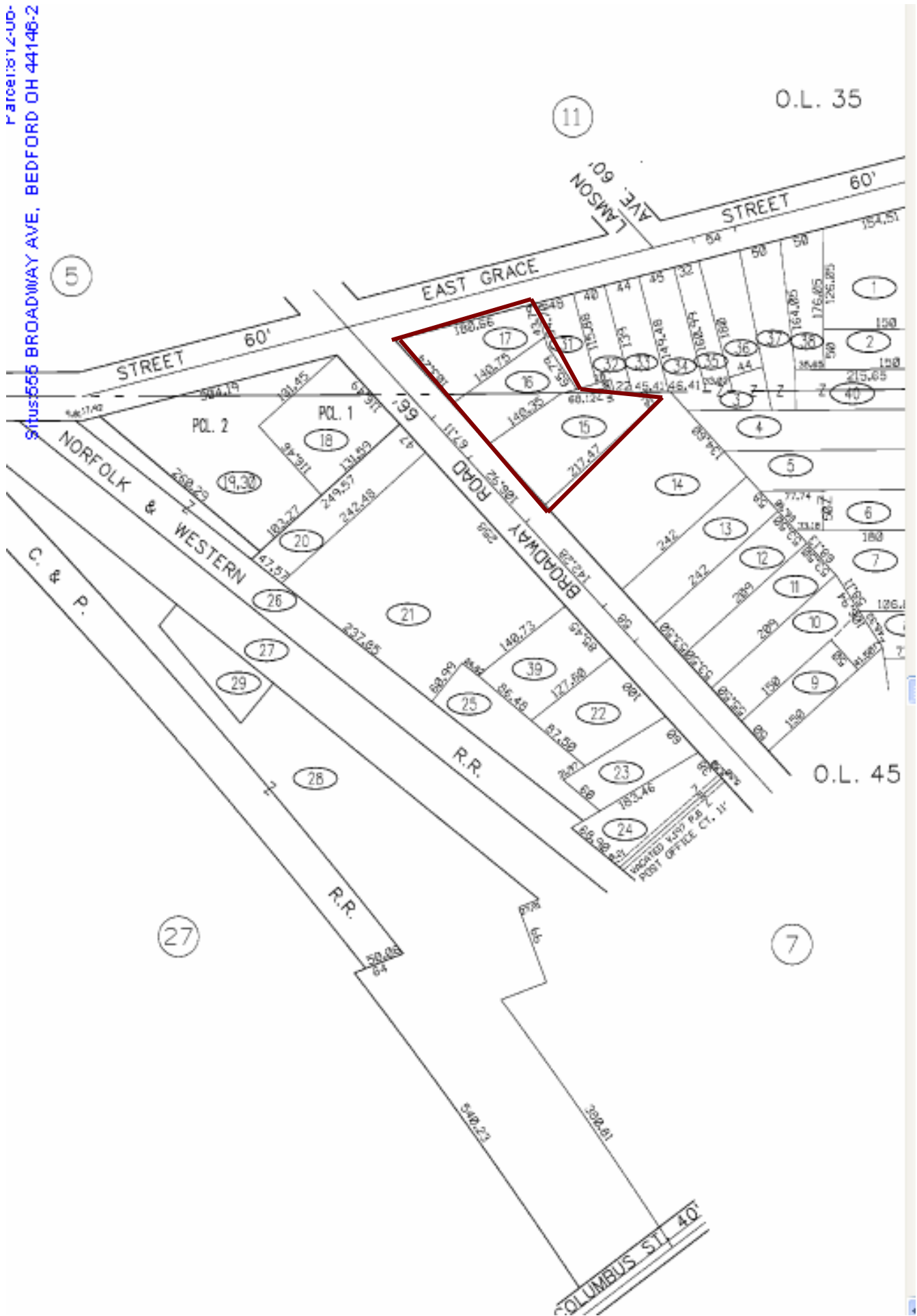
Broadway Ave

E Grace St

14

14

Parcel 12-UD-
Situs 555 BROADWAY AVE, BEDFORD OH 44146-2



O.L. 35

O.L. 45

11

5

27

7



Lat/Lon: 41.494505 / -81.685865

December 2009

RS

555 Broadway Ave Cleveland, Ohio		1.00 mi ra- dius	2.00 mi ra- dius	3.00 mi ra- dius	5.00 mi ra- dius
POPULATION	2003 Estimated Population	9,900	39,703	99,468	322,140
	2008 Projected Population	10,100	39,562	99,169	317,175
	2000 Census Population	9,622	39,466	99,161	324,952
	1990 Census Population	8,467	41,392	105,797	342,779
	Historical Annual Growth 1990 to 2003	1.3%	-0.3%	-0.5%	-0.5%
	Projected Annual Growth 2003 to 2008	0.4%	-0.1%	-0.1%	-0.3%
	2003 Median Age	30.9	30.3	30.4	32.0
HOUSEHOLDS	2003 Estimated Households	4,304	15,713	38,079	130,320
	2008 Projected Households	4,504	15,934	38,596	130,359
	2000 Census Households	4,123	15,466	37,570	130,138
	1990 Census Households	3,863	16,692	41,030	137,457
	Historical Annual Growth 1990 to 2003	0.9%	-0.5%	-0.6%	-0.4%
	Projected Annual Growth 2003 to 2008	0.9%	0.3%	0.3%	0.0%
POPULATION BY RACE	2003 Estimated White	34.7%	39.2%	42.5%	46.0%
	2003 Estimated Black or African American	58.5%	47.1%	43.2%	44.5%
	2003 Estimated Asian & Pacific Islander	2.1%	3.6%	2.0%	1.8%
	2003 Estimated American Indian & Native Alaskan	0.4%	0.5%	0.5%	0.3%
	2003 Estimated Other Races	4.3%	9.6%	11.9%	7.3%
	2003 Estimated Hispanic	4.8%	14.9%	18.4%	10.3%
INCOME	2003 Estimated Average Household Income	\$ 31,768	\$ 29,565	\$ 29,099	\$ 34,690
	2003 Estimated Median Household Income	\$ 22,735	\$ 22,054	\$ 22,365	\$ 27,550
	2003 Estimated Per Capita Income	\$ 16,353	\$ 13,103	\$ 11,868	\$ 14,413
EDUCATION (AGE 25+)	2003 Elementary	6.7%	9.4%	11.4%	8.3%
	2003 Some High School	20.3%	26.6%	29.6%	24.6%
	2003 High School Graduate	25.7%	27.2%	29.0%	31.7%
	2003 Some College	20.5%	18.2%	16.5%	18.7%
	2003 Associates Degree Only	2.3%	2.8%	3.0%	3.9%
	2003 Bachelors Degree Only	15.2%	9.7%	6.6%	7.9%
	2003 Graduate Degree	9.2%	6.1%	3.8%	5.0%
BUSINESS	Number of Businesses	8,118	11,519	13,843	21,036
	Total Number of Employees	118,086	180,036	209,634	315,905
	Employee Population per Business	14.5	15.6	15.1	15.0
	Residential Population per Business	1.2	3.4	7.2	15.3

This report was produced using data from private and government sources deemed to be reliable. The information herein is provided without representation or warranty.

