

Bentley Coe Plaza North Olmsted, Ohio



***24101-24201 Lorain Rd
AVAILABLE FOR LEASE***



HOUSEHOLDS

1 MILE - 4,642
2 MILE - 14,230
3 MILE - 26,200
5 MILE - 70,574

POPULATION

1 MILE - 11,045
2 MILE - 34,146
3 MILE - 61,146
5 MILE - 169,443

AVERAGE INCOME

1 MILE - \$57,582
2 MILE - \$64,390
3 MILE - \$67,074
5 MILE - \$69,856

Contact: Steve Eisenberg
24500 Chagrin Blvd., Suite 120
Beachwood, Ohio, 44122

Phone: 216-831-6773

Fax: 216-831-3869

E-mail: seisenberg@aol.com

PROPERTY FEATURES

Anchor Position Available

2,500-10,120 Square Feet

Co-Tenants - Verizon Wireless & Fast Signs

Easily Accessible with Ample Parking

Great Location with Excellent Visibility

ARNOLD J. EISENBERG, INC.



Clague Rd

INTERSTATE 480



SITE



Lorain Rd
Bentley Dr
Coe Ave

Walter Rd

Gessner Rd

Hwy 252

EDDY'S BIKE SHOP

CASUAL MALE X
31.548 ADT

Columbia Rd



Gessner Rd

Hwy 252

EDDY'S BIKE SHOP

CASUAL MALE X
31.548 ADT

Columbia Rd



Centerbury Rd

Recreation Center

Lorain Rd

Hwy 17



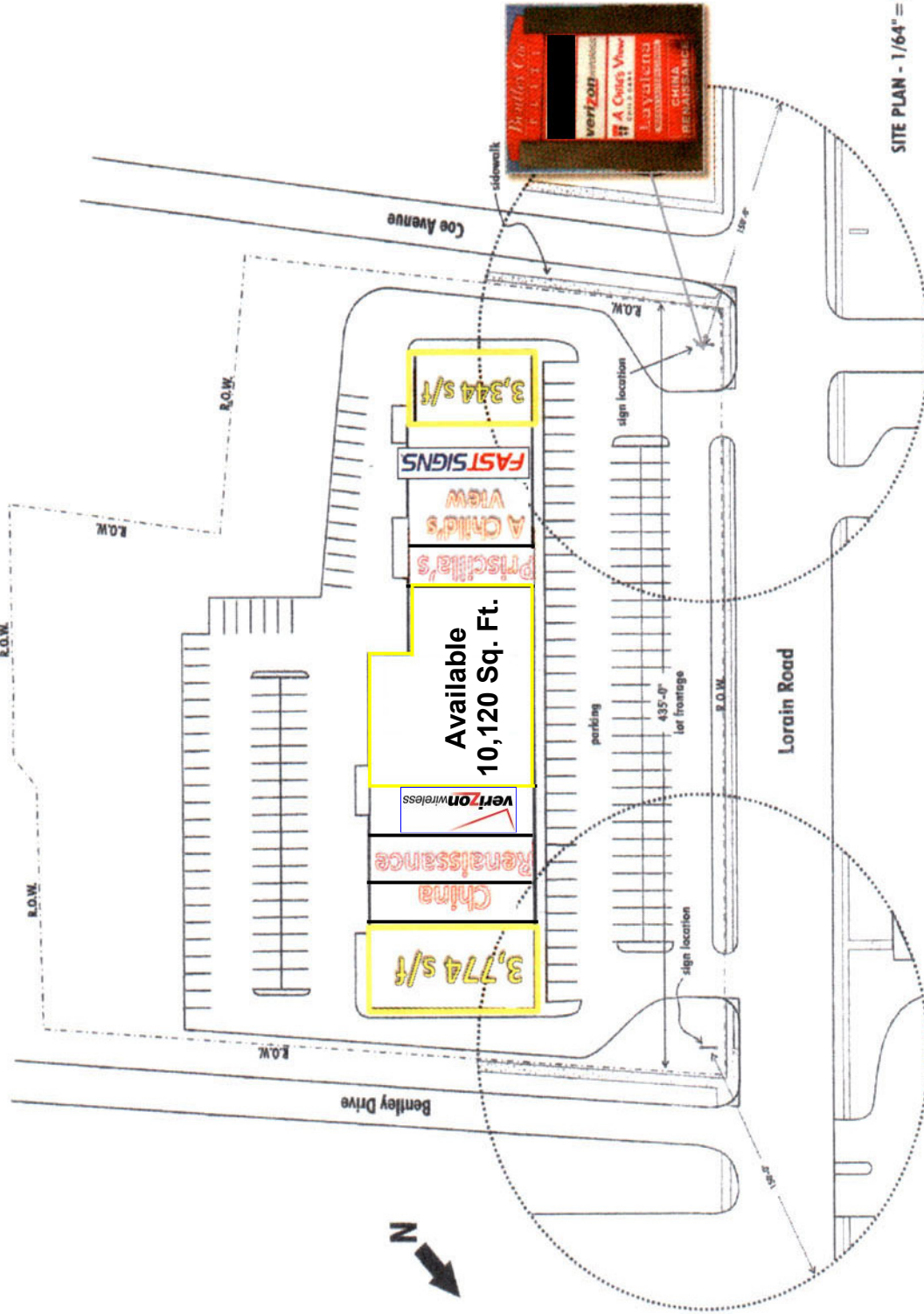
DICK'S

KAUFMANN'S

Great Northern Mall



JCPenney



SITE PLAN - 1/64" = 1'-0"



Prepared for:
Arnold J. Eisenberg, Inc.

EXECUTIVE SUMMARY

Coordinates

X:-81.8883
Y:41.4297

Bentley Coe Plaza North Olmsted OH	1.00 mile radius	2.00 mile radius	3.00 mile radius	5.00 mile radius
Square Miles Land Mass	3.14	12.56	28.26	74.25
Population & Growth				
2010 Total Population	11,045	34,146	61,146	169,443
2010 Population Density	3,518psm	2,719psm	2,164psm	2,282psm
2000-2010 Growth	-1,268 -10.3%	-4,863 -12.5%	-10,002 -14.1%	-23,017 -12.0%
2000-2010 Avg. Annual Growth	-127 -1.0%	-486 -1.2%	-1,000 -1.4%	-2,302 -1.2%
2015 Total Population	10,387	31,938	56,693	158,693
2015 Population Density	3,308psm	2,543psm	2,006psm	2,137psm
2010-2015 Proj. Pop. Growth	-658 -6.0%	-2,208 -6.5%	-4,453 -7.3%	-10,750 -6.3%
2010-2015 Avg. Annual Growth	-132 -1.2%	-442 -1.3%	-891 -1.5%	-2,150 -1.3%
2000 Total Population	12,313	39,009	71,148	192,460
1990 Total Population	12,443	39,628	72,312	189,076
Households & Growth				
2010 Households	4,642	14,230	26,200	70,574
2000-2010 Growth	-503 -9.8%	-1,803 -11.2%	-4,038 -13.4%	-9,410 -11.8%
2000-2010 Avg. Annual Growth	-63 -1.6%	-225 -1.9%	-505 -2.2%	-1,176 -2.0%
2015 Households	4,360	13,296	24,250	65,900
2010-2015 Growth	-281 -6.1%	-933 -6.6%	-1,950 -7.4%	-4,674 -6.6%
2010-2015 Avg. Annual Growth	-56 -1.2%	-187 -1.3%	-390 -1.5%	-935 -1.3%
2000 Households	5,145	16,032	30,238	79,984
1990 Households	4,958	15,528	28,981	74,626
Families				
2010 Families	2,994	9,455	16,604	45,023
2015 Families	2,816	8,842	15,395	42,108
Income				
2010 Agggregate HH Income	\$ 267.28 million	\$ 916.23 million	\$ 1,757.34 million	\$ 4,930.01 million
2010 Average Household Income	57,582	64,390	67,074	69,856
2010 Median Household Income	50,643	55,045	55,087	56,194
2010 Per Capita Income	23,913	26,362	27,933	28,292
2015 Aggregate HH Income	\$251.54million	\$857.13million	\$1,630.10million	\$4,611.24million
2015 Average Household Income	\$57,689	\$64,463	\$67,221	\$69,974
2015 Median Household Income	\$50,787	\$55,157	\$55,252	\$56,320
2015 Per Capita Income	\$23,899	\$26,345	\$27,973	\$28,325
Daytime Demographics				
Number of Employees	4,210	16,455	37,808	95,159
Number of Businesses	301	1,147	2,422	5924
Avg. number Employees per Bus.	14.0	14.3	15.6	16.1
Residents per Business	36.7	29.8	25.2	28.6
Total Aggregate Annual Payroll	\$116.3million	\$502.5million	\$1,220.3million	\$3,207.0million