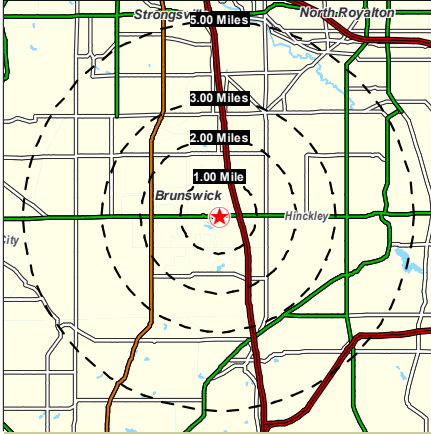


Brunswick Market Center Brunswick, Ohio

AVAILABLE FOR LEASE



HOUSEHOLDS

1 MILE - 3,777
2 MILE - 12,487
3 MILE - 18,562
5 MILE - 28,929

POPULATION

1 MILE - 10,201
2 MILE - 33,853
3 MILE - 51,481
5 MILE - 81,156

AVERAGE INCOME

1 MILE - \$65,788
2 MILE - \$64,699
3 MILE - \$71,795
5 MILE - \$80,964

Contact: Steve Eisenberg
24500 Chagrin Blvd., Suite 120
Beachwood, Ohio, 44122

Phone: 216-831-6773
Fax: 216-831-3869
E-mail: seisenberg@aol.com

PROPERTY FEATURES

Up to 6,500 Sq. Ft. Available

Easily Accessible with 2 Lighted Entrances

Area Retail: Home Depot, Kmart, Dollar General, Marcs,
Giant Eagle, GameStop, Applebees, Chipotle, Steak n Shake,
Paninni's, McDonalds, Taco Bell, Burger King, Arbys

Traffic Counts on Rte 303 - 30,000 ADT

ARNOLD J. EISENBERG, INC.



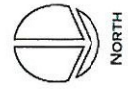
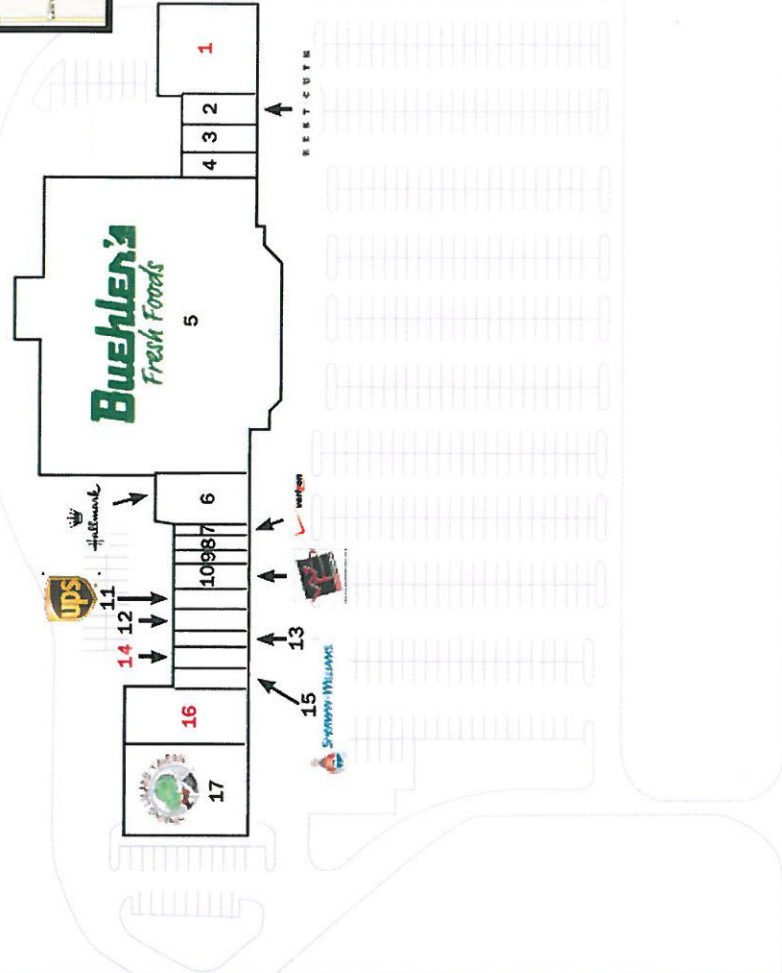
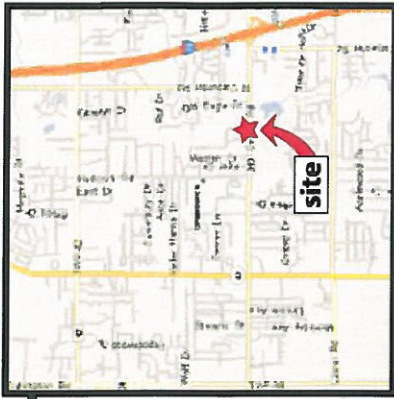
STORE LISTING

Brunswick Market Center
3630-3714 Center Road
Brunswick, OH 44212

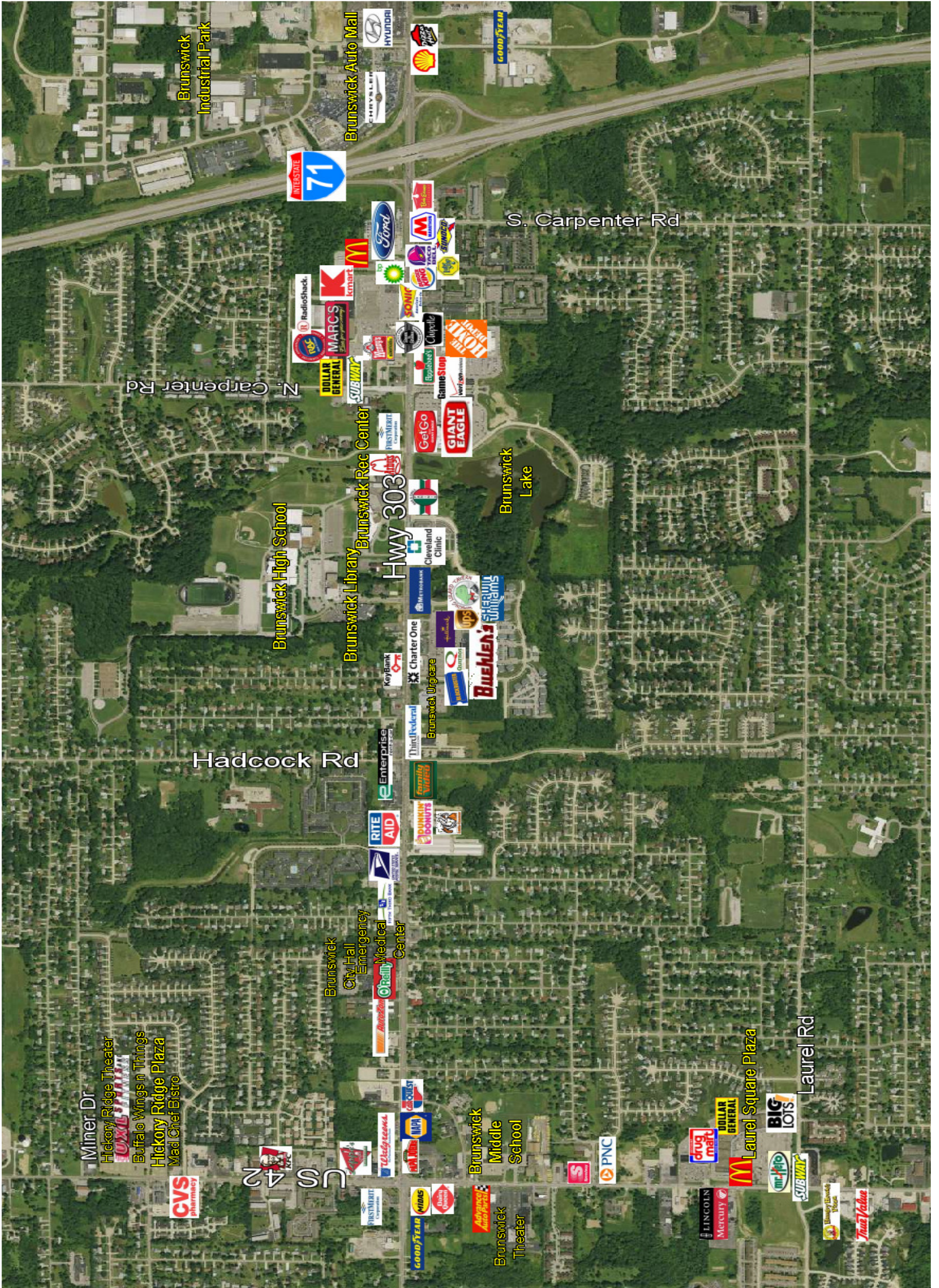
GLA: 119,540 Sq. Ft.

Unit #	Address	Sq. Ft.	Tenant
1	3714	6,480	Coming Available
2	3710	1,122	Best Cuts
3	3706	1,200	Sub Hub
4	3702	1,200	Barany Jewelry
5	3688	75,569	Buehler's
6	3674	5,200	Hallmark
7	3670	2,000	Verizon
8	3668	2,000	King Dragon
9	3666	1,200	Little Caesars
10	3664	3,200	Woodard Photographic
11	3660	1,450	The UPS Store
12	3658	1,519	Nails Planet & Tanning
13	3656	1,600	Check Into Cash
14	3654	1,600	Coming Available
15	3640/3642	4,000	Sherwin-Williams
16	3638	3,000	Available
17	3634	7,200	Winking Lizard

Brunswick Market Center



Information given in this presentation is for illustrative marketing purposes only. All information is subject to verification and no liability for errors or omissions is assumed.



Miner Dr

Hickory Ridge Theater
Buffalo Wings in Things
Hickory Ridge Plaza
Mad Chef Bistro

US 42

Brunswick
City Hall
Emergency
Medical
Center

Hadcock Rd

Brunswick High School

Brunswick Library
Brunswick Rec Center

HWY 303

Brunswick Lake

S. Carpenter Rd

N. Carpenter Rd

Brunswick Auto Mall

Brunswick
Industrial Park

Laurel Rd

Laurel Square Plaza

Brunswick
Middle
School

Brunswick
Theater



Prepared for:
Arnold J. Eisenberg, Inc.

EXECUTIVE SUMMARY

Coordinates
X:-81.8146
Y:41.2383

Brunswick Marketplace Brunswick Ohio 44212	1.00 mile radius	2.00 mile radius	3.00 mile radius	5.00 mile radius
Square Miles Land Mass	3.14	12.56	28.26	78.49
Population & Growth				
2010 Total Population	10,201	33,853	51,481	81,156
2010 Population Density	3,249psm	2,696psm	1,822psm	1,034psm
2000-2010 Growth	2,725 36.4%	8,985 36.1%	10,082 24.4%	8,963 12.4%
2000-2010 Avg. Annual Growth	272 3.6%	898 3.6%	1,008 2.4%	896 1.2%
2015 Total Population	10,638	35,436	53,624	82,723
2015 Population Density	3,388psm	2,822psm	1,898psm	1,054psm
2010-2015 Proj. Pop. Growth	437 4.3%	1,584 4.7%	2,144 4.2%	1,567 1.9%
2010-2015 Avg. Annual Growth	87 0.9%	317 0.9%	429 0.8%	313 0.4%
2000 Total Population	7,476	24,868	41,399	72,193
1990 Total Population	6,318	20,865	34,807	59,527
Households & Growth				
2010 Households	3,777	12,487	18,562	28,929
2000-2010 Growth	1,026 37.3%	3,595 40.4%	4,027 27.7%	3,697 14.7%
2000-2010 Avg. Annual Growth	128 6.2%	449 6.7%	503 4.6%	462 2.4%
2015 Households	3,938	13,071	19,335	29,491
2010-2015 Growth	161 4.3%	584 4.7%	772 4.2%	563 1.9%
2010-2015 Avg. Annual Growth	32 0.9%	117 0.9%	154 0.8%	113 0.4%
2000 Households	2,751	8,892	14,536	25,232
1990 Households	2,069	6,734	11,080	19,028
Families				
2010 Families	2,958	9,450	14,541	23,045
2015 Families	3,084	9,887	15,140	23,481
Income				
2010 Aggregate HH Income	\$ 248.48 million	\$ 807.90 million	\$ 1,332.68 million	\$ 2,342.18 million
2010 Average Household Income	65,788	64,699	71,795	80,964
2010 Median Household Income	57,763	59,454	64,456	67,041
2010 Per Capita Income	23,852	22,648	24,863	28,171
2015 Aggregate HH Income	\$258.86million	\$845.52million	\$1,388.20million	\$2,386.67million
2015 Average Household Income	\$65,740	\$64,689	\$71,799	\$80,928
2015 Median Household Income	\$57,788	\$59,511	\$64,504	\$67,076
2015 Per Capita Income	\$23,811	\$22,615	\$24,822	\$28,096
Daytime Demographics				
Number of Employees	1,008	3,817	7,590	19,706
Number of Businesses	99	378	731	1625
Avg. number Employees per Bus.	10.1	10.1	10.4	12.1
Residents per Business	102.6	89.5	70.4	49.9
Total Aggregate Annual Payroll	\$25.9million	\$98.7million	\$201.0million	\$561.0million