

ARNOLD J. EISENBERG

Retail Leasing Specialist

24500 Chagrin Blvd., Suite 120
Beachwood, Ohio 44122



Country Fair Shopping Center

Whipple Rd & Tuscarawas St - Canton, OH



Property Features

- New Retail Space Facing Canton Centre Mall across from Wal Mart
- Recently Added Citi Trends, Dollar Tree, Jimmy Johns, and Mattress Firm Outlet
- 1,858 SF End-Cap & Fully Fixtured 4,400 SF Restaurant Opportunity
- Up to 7,500 SF Office / Medical Available (Divisible to 3,800 and 3,700 SF)
- High Traffic Count at Lighted Intersection

Contact

Steve Eisenberg
216-831-6773
SEisenberg@aol.com

Lisa Wiener
216-831-6773
ljwiener@gmail.com

Arnold J. Eisenberg, Inc., has been specializing in retail leasing, tenant / landlord representation, management, and consulting for the last 50 years. Arnold J. Eisenberg, Inc. is also a founding member of the Retail Brokers Network with over 75 offices of the best commercial real estate brokers across the United States, Canada, and Mexico.

Demographics

	<u>1-mile</u>	<u>3-mile</u>	<u>5-mile</u>
Population	11,368	65,579	147,283
Households	4,956	27,868	62,049
Average HH Income	\$46,032	\$52,325	\$54,406
Daytime population	5,445	29,293	61,548



ARNOLD J. EISENBERG

Retail Leasing Specialist

24500 Chagrin Blvd., Suite 120
Beachwood, Ohio 44122



Country Fair Shopping Center

Whipple Rd & Tuscarawas St - Canton, OH

Site Plan I



Contact

Steve Eisenberg
216-831-6773
SEisenberg@aol.com

Lisa Wiener
216-831-6773
ljwiener@gmail.com

ARNOLD J. EISENBERG

Retail Leasing Specialist

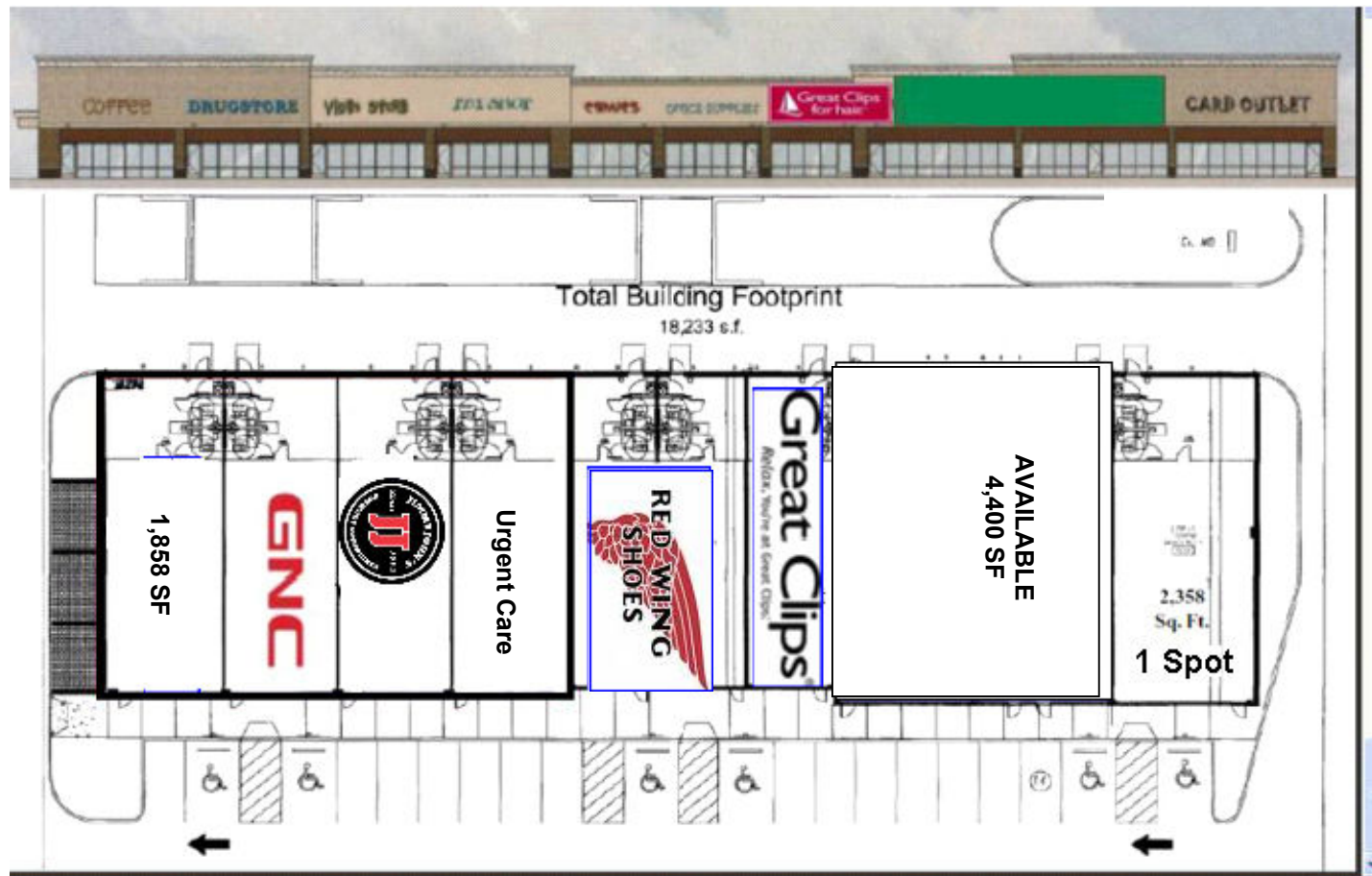
24500 Chagrin Blvd., Suite 120
Beachwood, Ohio 44122



Country Fair Shopping Center

Whipple Rd & Tuscarawas St - Canton, OH

Site Plan II



Contact

Steve Eisenberg
216-831-6773
SEisenberg@aol.com

Lisa Wiener
216-831-6773
ljwiener@gmail.com