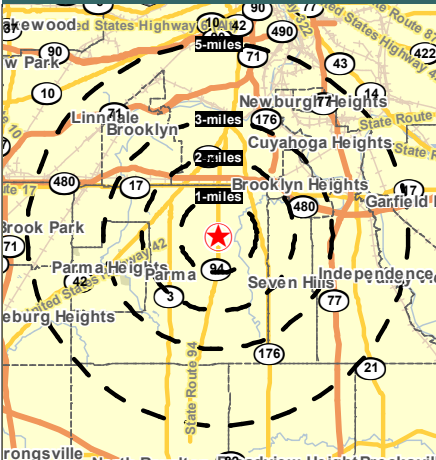


# State Hill Plaza Parma, Ohio



## *AVAILABLE FOR LEASE* *5990 State Road*



**HOUSEHOLDS**  
1 MILE - 7,025  
3 MILE - 46,607  
5 MILE - 103,340

**POPULATION**  
1 MILE - 16,674  
3 MILE - 109,082  
5 MILE - 252,004

**AVERAGE INCOME**  
1 MILE - \$49,761  
3 MILE - \$53,475  
5 MILE - \$54,415

**DAYTIME POPULATION**  
1 MILE - 2,975  
3 MILE - 46,870  
5 MILE - 126,066

Contact: David Stein  
24500 Chagrin Blvd., Suite 120  
Beachwood, Ohio , 44122

Phone: 216-831-6773  
Fax: 216-831-3869  
E-mail: Distein957@aol.com

### Property Features

Up to 4,200 Square Feet

Anchored by Family Dollar

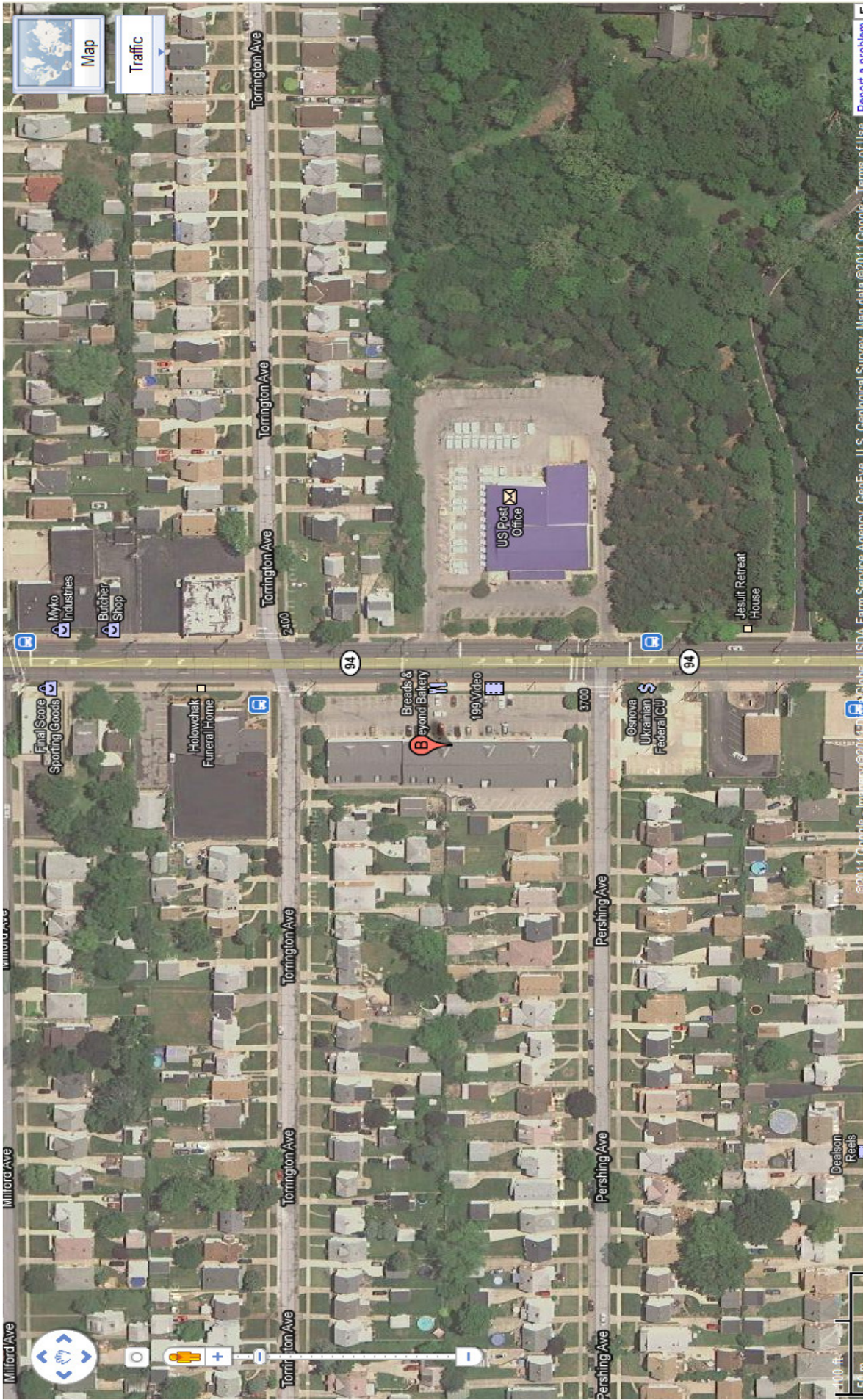
Across from U.S. Post Office & Traffic Light

Easily Accessible with Ample Parking

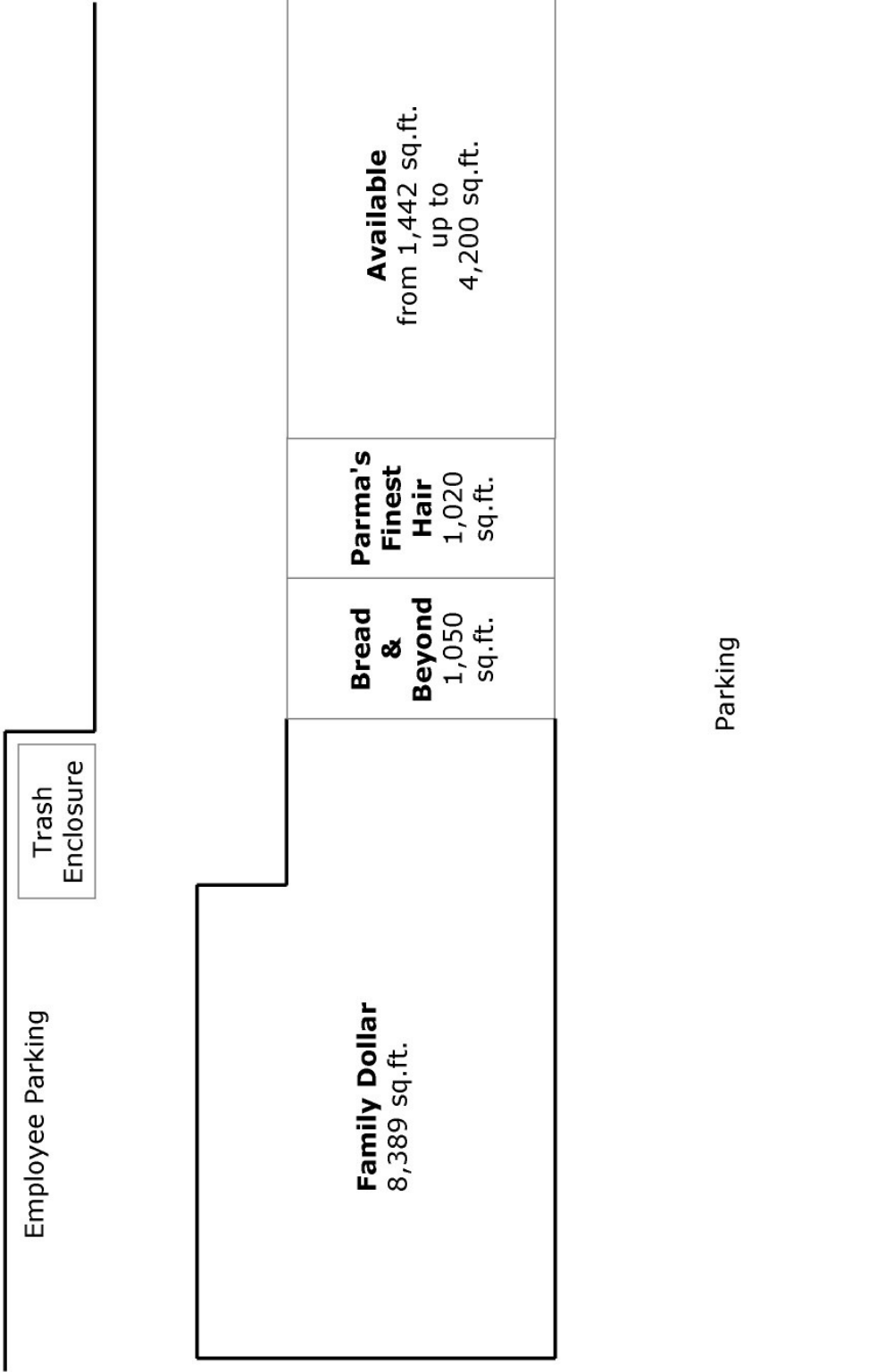
Favorable Lease Terms

## ARNOLD J. EISENBERG, INC.





# STATEHILL PLAZA



P e r s h i n g A v e

State Road





Prepared for:  
Arnold J. Eisenberg, Inc.

**EXECUTIVE SUMMARY**

**Coordinates**

X:-81.7105

Y:41.3999

| <b>5990 State Rd<br/>Parma OH</b> | <b>1.00<br/>mile radius</b> | <b>2.00<br/>mile radius</b> | <b>3.00<br/>mile radius</b> | <b>5.00<br/>mile radius</b> |
|-----------------------------------|-----------------------------|-----------------------------|-----------------------------|-----------------------------|
| Square Miles Land Mass            | 3.14                        | 12.56                       | 28.26                       | 78.49                       |
| <b>Population &amp; Growth</b>    |                             |                             |                             |                             |
| 2010 Total Population             | 16,674                      | 56,408                      | 109,082                     | 252,004                     |
| 2010 Population Density           | 5,311psm                    | 4,492psm                    | 3,861psm                    | 3,211psm                    |
| 2000-2010 Growth                  | -2,971 -15.1%               | -9,860 -14.9%               | -17,616 -13.9%              | -31,190 -11.0%              |
| 2000-2010 Avg. Annual Growth      | -297 -1.5%                  | -986 -1.5%                  | -1,762 -1.4%                | -3,119 -1.1%                |
| 2015 Total Population             | 15,465                      | 52,353                      | 101,479                     | 237,775                     |
| 2015 Population Density           | 4,926psm                    | 4,169psm                    | 3,591psm                    | 3,029psm                    |
| 2010-2015 Proj. Pop. Growth       | -1,209 -7.3%                | -4,056 -7.2%                | -7,603 -7.0%                | -14,228 -5.6%               |
| 2010-2015 Avg. Annual Growth      | -242 -1.5%                  | -811 -1.4%                  | -1,521 -1.4%                | -2,846 -1.1%                |
| 2000 Total Population             | 19,645                      | 66,269                      | 126,698                     | 283,194                     |
| 1990 Total Population             | 20,269                      | 68,336                      | 129,463                     | 283,628                     |
| <b>Households &amp; Growth</b>    |                             |                             |                             |                             |
| 2010 Households                   | 7,025                       | 23,741                      | 46,607                      | 103,340                     |
| 2000-2010 Growth                  | -1,139 -13.9%               | -4,025 -14.5%               | -7,240 -13.4%               | -12,019 -10.4%              |
| 2000-2010 Avg. Annual Growth      | -142 -2.3%                  | -503 -2.4%                  | -905 -2.2%                  | -1,502 -1.7%                |
| 2015 Households                   | 6,514                       | 22,029                      | 43,340                      | 97,242                      |
| 2010-2015 Growth                  | -510 -7.3%                  | -1,713 -7.2%                | -3,266 -7.0%                | -6,098 -5.9%                |
| 2010-2015 Avg. Annual Growth      | -102 -1.5%                  | -343 -1.4%                  | -653 -1.4%                  | -1,220 -1.2%                |
| 2000 Households                   | 8,163                       | 27,767                      | 53,846                      | 115,359                     |
| 1990 Households                   | 8,229                       | 27,763                      | 53,190                      | 112,333                     |
| <b>Families</b>                   |                             |                             |                             |                             |
| 2010 Families                     | 4,513                       | 15,448                      | 29,650                      | 67,115                      |
| 2015 Families                     | 4,181                       | 14,320                      | 27,549                      | 63,185                      |
| <b>Income</b>                     |                             |                             |                             |                             |
| 2010 Aggregate HH Income          | \$ 349.56 million           | \$1,230.09 million          | \$ 2,492.29 million         | \$ 5,623.21 million         |
| 2010 Average Household Income     | 49,761                      | 51,812                      | 53,475                      | 54,415                      |
| 2010 Median Household Income      | 41,821                      | 44,571                      | 46,008                      | 46,101                      |
| 2010 Per Capita Income            | 21,094                      | 21,495                      | 22,231                      | 22,248                      |
| 2015 Aggregate HH Income          | \$325.54million             | \$1,143.25million           | \$2,321.54million           | \$5,297.69million           |
| 2015 Average Household Income     | \$49,973                    | \$51,898                    | \$53,565                    | \$54,480                    |
| 2015 Median Household Income      | \$41,836                    | \$44,600                    | \$46,077                    | \$46,167                    |
| 2015 Per Capita Income            | \$21,202                    | \$21,536                    | \$22,272                    | \$22,272                    |
| <b>Daytime Demographics</b>       |                             |                             |                             |                             |
| Number of Employees               | 2,975                       | 18,216                      | 46,870                      | 126,066                     |
| Number of Businesses              | 243                         | 1,168                       | 2,566                       | 6311                        |
| Avg. number Employees per Bus.    | 12.3                        | 15.6                        | 18.3                        | 20.0                        |
| Residents per Business            | 68.8                        | 48.3                        | 42.5                        | 39.9                        |
| Total Aggregate Annual Payroll    | \$63.2million               | \$475.2million              | \$1,443.6million            | \$4,379.0million            |