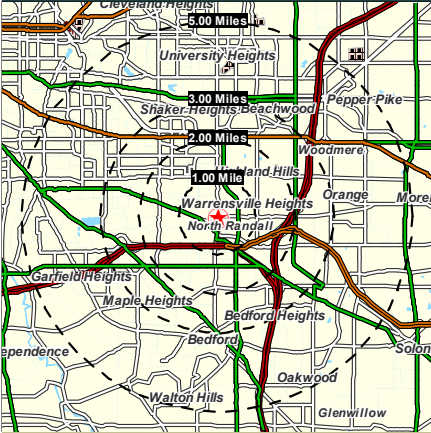


Warrensville Center & Emery Rd. North Randall, Ohio



HOUSEHOLDS
1 MILE - 4,055
2 MILE - 19,912
3 MILE - 44,800
5 MILE - 113,332

POPULATION
1 MILE - 9,357
2 MILE - 48,963
3 MILE - 107,740
5 MILE - 278,045

AVERAGE INCOME
1 MILE - \$44,413
2 MILE - \$49,430
3 MILE - \$54,890
5 MILE - \$61,978

Contact: Richard Halle
24500 Chagrin Blvd Beachwood,
Ohio, 44122
arnoldjeisenberg.com
Phone: 216-831-6773
Fax: 216-831-3869

AVAILABLE FOR LEASE



Property Features

- Excellent Location
- Strong Demographics
- Easily Accessible
- Favorable Lease Terms

ARNOLD J. EISENBERG, INC.





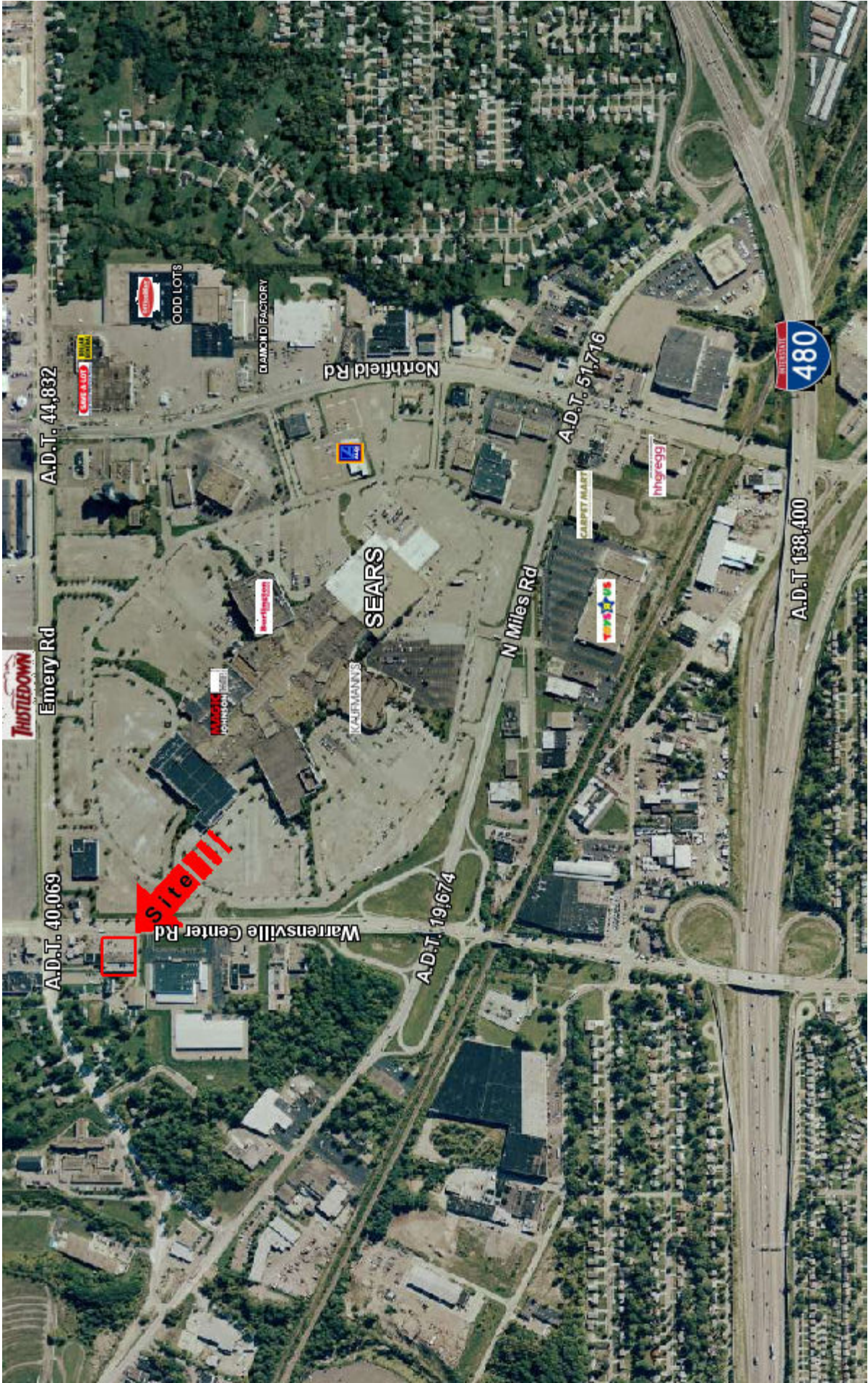
A.D.T. 40,069

Site

Center Rd

THIST

MAG
JOHNS



A.D.T. 40,069

Emery Rd

A.D.T. 44,832

Site III

Warrenville Center Rd

Home Depot

Home Depot

Home Depot

DIAMOND FACTORY

ODD LOTS

Northfield Rd

SEARS

K&M MANN'S

A.D.T. 19,674

N Miles Rd

A.D.T. 51,716

LIBERTY MARKET

hhsregg

480

A.D.T. 138,400

TRUSTEDOWN

SUMMARY DEMOGRAPHIC PROFILE

2000 Census, 2003 Estimates & 2008 Projections

Calculated using Proportional Block Groups



Lat/Lon: 41.435053 / -81.535943

June 2009

RS
1

Emery Rd & Warrensville Center Rd North Randall, Ohio		1.00 mi ra- dius	2.00 mi ra- dius	3.00 mi ra- dius	5.00 mi ra- dius
POPULATION	2003 Estimated Population	9,357	48,963	107,740	278,045
	2008 Projected Population	8,988	47,781	105,523	271,562
	2000 Census Population	9,618	49,645	108,396	281,703
	1990 Census Population	9,939	52,412	114,610	294,453
	Historical Annual Growth 1990 to 2003	-0.5%	-0.5%	-0.5%	-0.4%
	Projected Annual Growth 2003 to 2008	-0.8%	-0.5%	-0.4%	-0.5%
	2003 Median Age	39.1	39.0	38.5	37.7
HOUSEHOLDS	2003 Estimated Households	4,055	19,912	44,800	113,332
	2008 Projected Households	3,949	19,707	44,651	112,593
	2000 Census Households	4,129	20,012	44,459	113,455
	1990 Census Households	4,235	20,367	45,265	114,121
	Historical Annual Growth 1990 to 2003	-0.3%	-0.2%	-0.1%	-0.1%
	Projected Annual Growth 2003 to 2008	-0.5%	-0.2%	-0.1%	-0.1%
POPULATION BY RACE	2003 Estimated White	11.3%	18.4%	29.9%	43.2%
	2003 Estimated Black or African American	85.4%	78.5%	66.6%	53.4%
	2003 Estimated Asian & Pacific Islander	0.7%	0.9%	1.2%	1.4%
	2003 Estimated American Indian & Native Alaskan	0.2%	0.1%	0.1%	0.1%
	2003 Estimated Other Races	2.3%	2.1%	2.1%	1.9%
	2003 Estimated Hispanic	1.7%	1.2%	1.2%	1.3%
INCOME	2003 Estimated Average Household Income	\$ 44,413	\$ 49,430	\$ 54,890	\$ 61,978
	2003 Estimated Median Household Income	\$ 37,051	\$ 41,814	\$ 44,241	\$ 47,161
	2003 Estimated Per Capita Income	\$ 19,799	\$ 20,699	\$ 23,233	\$ 25,565
EDUCATION (AGE 25+)	2003 Elementary	6.1%	4.6%	4.2%	4.0%
	2003 Some High School	17.0%	15.1%	14.2%	14.3%
	2003 High School Graduate	34.0%	33.1%	30.7%	29.4%
	2003 Some College	23.4%	24.1%	23.1%	21.2%
	2003 Associates Degree Only	6.0%	6.1%	5.6%	5.1%
	2003 Bachelors Degree Only	9.7%	11.2%	12.9%	13.9%
	2003 Graduate Degree	3.8%	5.6%	9.2%	11.9%
BUSINESS	Number of Businesses	631	2,482	6,083	12,404
	Total Number of Employees	10,825	33,157	74,816	151,058
	Employee Population per Business	17.1	13.4	12.3	12.2
	Residential Population per Business	14.8	19.7	17.7	22.4

This report was produced using data from private and government sources deemed to be reliable. The information herein is provided without representation or warranty.