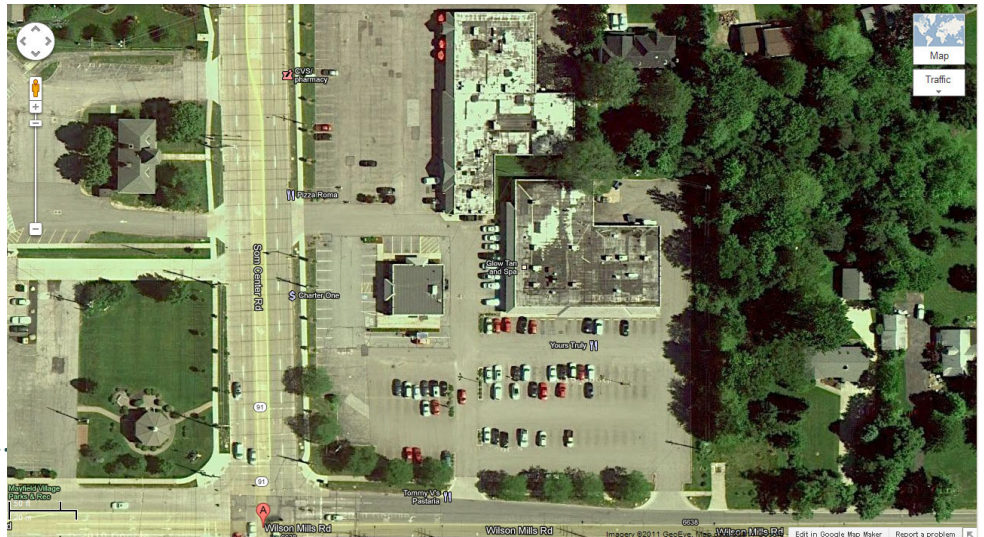


Wilson Mills Rd & SOM Center Rd Mayfield Village, Ohio



Village Plaza New Renovation Up to 5,000 Sq. Ft. Available



HOUSEHOLDS
 1 MILE - 2,815
 2 MILE - 9,041
 3 MILE - 16,790
 5 MILE - 45,764

POPULATION
 1 MILE - 5,633
 2 MILE - 19,328
 3 MILE - 38,318
 5 MILE - 106,433

DAYTIME POPULATION
 1 MILE - 5,045
 2 MILE - 16,240
 3 MILE - 31,079
 5 MILE - 76,675

Contact: Steve Eisenberg
 24500 Chagrin Blvd., Suite 120
 Beachwood, Ohio, 44122

Phone: 216-831-6773
 Fax: 216-831-3869
 E-mail: seisenberg@aol.com

PROPERTY FEATURES

Area Retail - Heinen's, Yours Truly, Kohls, Home Depot, CVS

Major Employer - Progressive Ins. World Headquarters

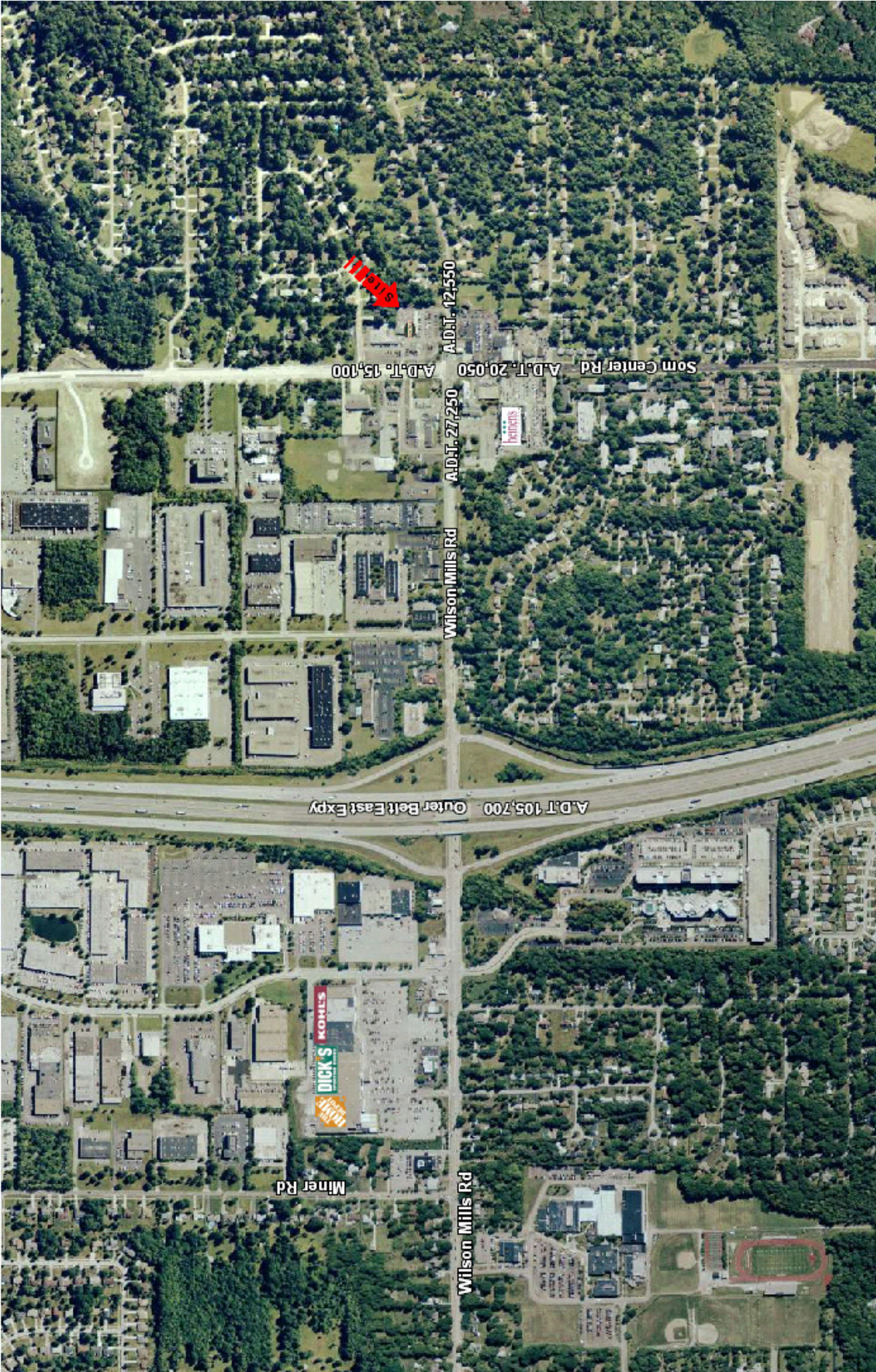
High Visibility at Lighted Intersection

High Traffic Counts

Easily Accessible

ARNOLD J. EISENBERG, INC.





Som Center Rd A.D.T. 20,050 A.D.T. 15,100

A.D.T. 12,550

A.D.T. 27,250

Wilson Mills Rd

Outer Belt East Expy A.D.T. 105,700

Miner Rd

Wilson Mills Rd



Prepared for:
Arnold J. Eisenberg, Inc.

EXECUTIVE SUMMARY

Coordinates

X:-81.4388

Y:41.5389

Wilson Mills Rd & SOM Center Rd Mayfield OH	1.00 mile radius	2.00 mile radius	3.00 mile radius	5.00 mile radius
Square Miles Land Mass	3.14	12.56	28.26	78.49
Population & Growth				
2009 Total Population	5,633	19,328	38,318	106,433
2009 Population Density	1,794psm	1,539psm	1,356psm	1,356psm
2000-2009 Growth	-1,146 -16.9%	-3,689 -16.0%	-6,581 -14.7%	-15,741 -12.9%
2000-2009 Avg. Annual Growth	-143 -2.8%	-461 -2.7%	-823 -2.4%	-1,968 -2.1%
2014 Total Population	5,148	17,730	35,372	99,680
2014 Population Density	1,640psm	1,412psm	1,252psm	1,270psm
2009-2014 Proj. Pop. Growth	-485 -8.6%	-1,598 -8.3%	-2,946 -7.7%	-6,753 -6.3%
2009-2014 Avg. Annual Growth	-97 -1.7%	-320 -1.7%	-589 -1.5%	-1,351 -1.3%
2000 Total Population	6,779	23,017	44,898	122,174
1990 Total Population	6,587	22,811	43,322	120,512
Households & Growth				
2009 Households	2,815	9,041	16,790	45,764
2000-2009 Growth	-588 -17.3%	-1,767 -16.3%	-2,874 -14.6%	-6,721 -12.8%
2000-2009 Avg. Annual Growth	-73 -2.9%	-221 -2.7%	-359 -2.4%	-840 -2.1%
2014 Households	2,554	8,248	15,436	42,669
2009-2014 Growth	-261 -9.3%	-794 -8.8%	-1,354 -8.1%	-3,095 -6.8%
2009-2014 Avg. Annual Growth	-52 -1.9%	-159 -1.8%	-271 -1.6%	-619 -1.4%
2000 Households	3,403	10,808	19,664	52,486
1990 Households	3,375	10,693	18,991	50,615
Families				
2009 Families	1,438	5,165	10,749	29,536
2014 Families	1,318	4,740	9,924	27,662
Income				
2009 Aggregate HH Income	\$ 287.47 million	\$1,112.13 million	\$ 2,029.89 million	\$ 5,500.88 million
2009 Average Household Income	102,112	123,004	120,898	120,201
2009 Median Household Income	75,182	89,287	87,290	82,962
2009 Per Capita Income	40,430	46,583	46,230	46,887
2014 Aggregate HH Income	\$262.40million	\$1,020.93million	\$1,871.50million	\$5,129.29million
2014 Average Household Income	\$102,738	\$123,782	\$121,245	\$120,211
2014 Median Household Income	\$75,653	\$89,758	\$87,597	\$83,096
2014 Per Capita Income	\$40,737	\$47,082	\$46,501	\$46,911
Daytime Demographics				
Number of Employees	5,045	16,240	31,079	76,675
Number of Businesses	197	682	1,433	4181
Avg. number Employees per Bus.	25.6	23.8	21.7	18.3
Residents per Business	28.6	28.3	26.7	25.5
Total Aggregate Annual Payroll	\$212.7million	\$682.5million	\$1,292.3million	\$3,064.4million